



JOHNS HOPKINS
BLOOMBERG SCHOOL
of PUBLIC HEALTH

Bloomberg American
Health Initiative

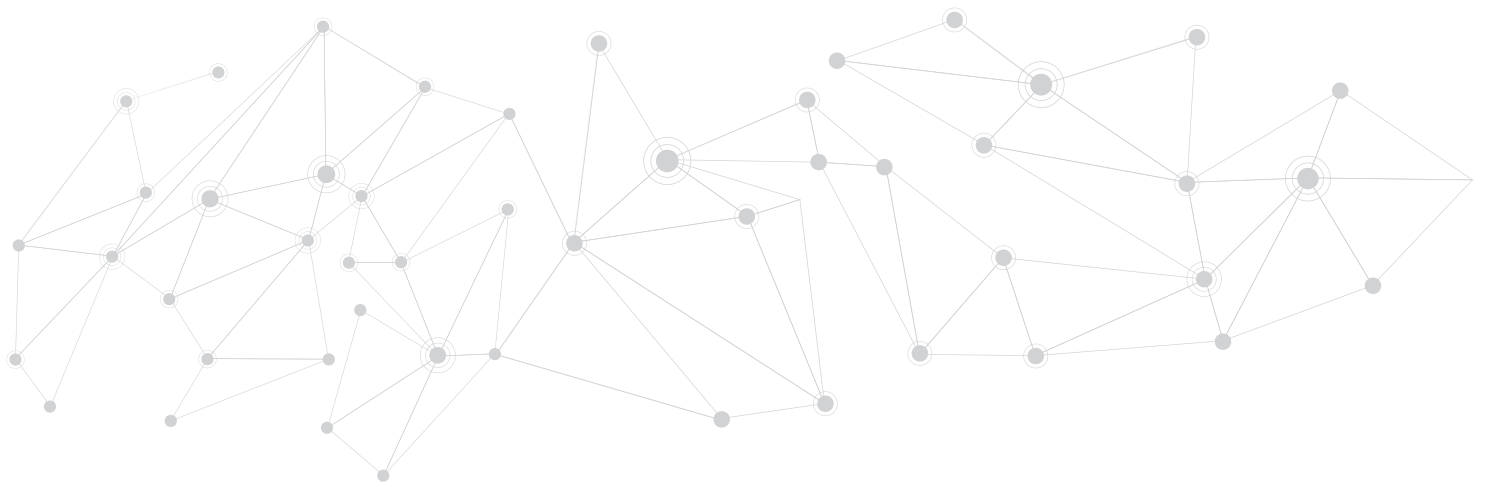
Are you working to prevent violence in your community?

Enhance your impact with a fully-funded MPH degree from the Johns Hopkins Bloomberg School of Public Health

The Bloomberg Fellows Program is accepting applications from individuals working in law enforcement, the criminal justice system, health departments, and community based organizations to prevent violence in their communities. This program offers a full scholarship and \$10,000 stipend for the Master of Public Health (MPH) program at the Johns Hopkins Bloomberg School of Public Health.

The Bloomberg American Health Initiative

The Bloomberg American Health Initiative is a unique program that aims to improve health and save lives in the United States by tackling complex and urgent health challenges. There is special attention throughout the Initiative on advancing equity, using evidence, and changing policy. We seek to equip fellows with new knowledge, skills and tools to understand and prevent violence — including community violence, intimate partner violence, and suicide.



The Bloomberg Fellows Program

The Bloomberg Fellows Program is not your traditional scholarship program. It supports people who are already making an impact in their communities, as well as their organizations on the front lines of change.

Candidates must apply with support from their employer. Fellows can choose to pursue the MPH degree full-time or part-time, primarily in Baltimore or virtually. After graduation, fellows take their skills back to their organizations and work for at least one year. Their organizations have opportunities to join an innovative national network working to address violence.

Candidates for the Bloomberg Fellowship must apply and be accepted to the school's MPH program. As part of your MPH degree, you will receive training in core topics including epidemiology, statistics, behavior change, management, policy and problem solving, and others, as well as have the option to take courses specifically related to violence.

The Bloomberg Fellows Program strives for a highly diverse class in terms of race and ethnicity, income, geography, and other key areas.

To learn more about the Bloomberg Fellows Program

Visit us online at AmericanHealth.jhu.edu
Email: BloombergFellowsMPH@jhu.edu
LinkedIn: [@Bloomberg American Health Initiative](#)
Instagram: [@BloombergAmericanHealth](#)

Examples of the types of courses offered in the MPH Program in the violence focus area:

Understanding and Preventing Violence

Suicide as a Public Health Problem

Issues in Injury Control and Violence Prevention

The Opioid Crises: Problem Solving Seminar

Gender Based Violence Research, Practice and Policy: Issues and Current Controversies

Injury and Violence Prevention: Behavioral Sciences Theories and Applications

Implementation and Sustainability of Community-Based Health Programs

Crises and Response in Public Health Policy and Practice

Public Health and the Law

Epidemiologic Methods in Injury and Violence Control

Media Advocacy and Public Health: Theory and Practice